

Public Document Pack

This page is intentionally left blank

The Way Ahead: Civil society at the heart of London

James Banks, Chief Executive of Greater London Volunteering

Who was involved...

- ▶ GLV, London Funders and London Voluntary Service Council
- ▶ Frontline groups, volunteers, civil society support organisations, funders, local authorities...
- ▶ Reference Group for the research:
 - ▶ Big Lottery Fund
 - ▶ Community Links
 - ▶ Greater London Authority
 - ▶ City Bridge Trust
 - ▶ Race on the Agenda
 - ▶ Rocket Science
 - ▶ Heart of the City
 - ▶ Children England
 - ▶ London Borough of Southwark

Defining civil society

- ▶ Civil society is where people take action to improve their own lives or the lives of others and act where government or the private sector don't.
- ▶ Civil society is driven by the values of fairness and equality, and enables people to feel valued and to belong.
- ▶ It includes formal organisations such as voluntary and community organisations, informal groups of people who join together for a common purpose and individuals who take action to make their community a better place to live.

The context

- ▶ London needs a vibrant civil society to prosper
- ▶ Civil society needs support and a voice
- ▶ Opportunity to rethink how support is provided to civil society in London

The process of review

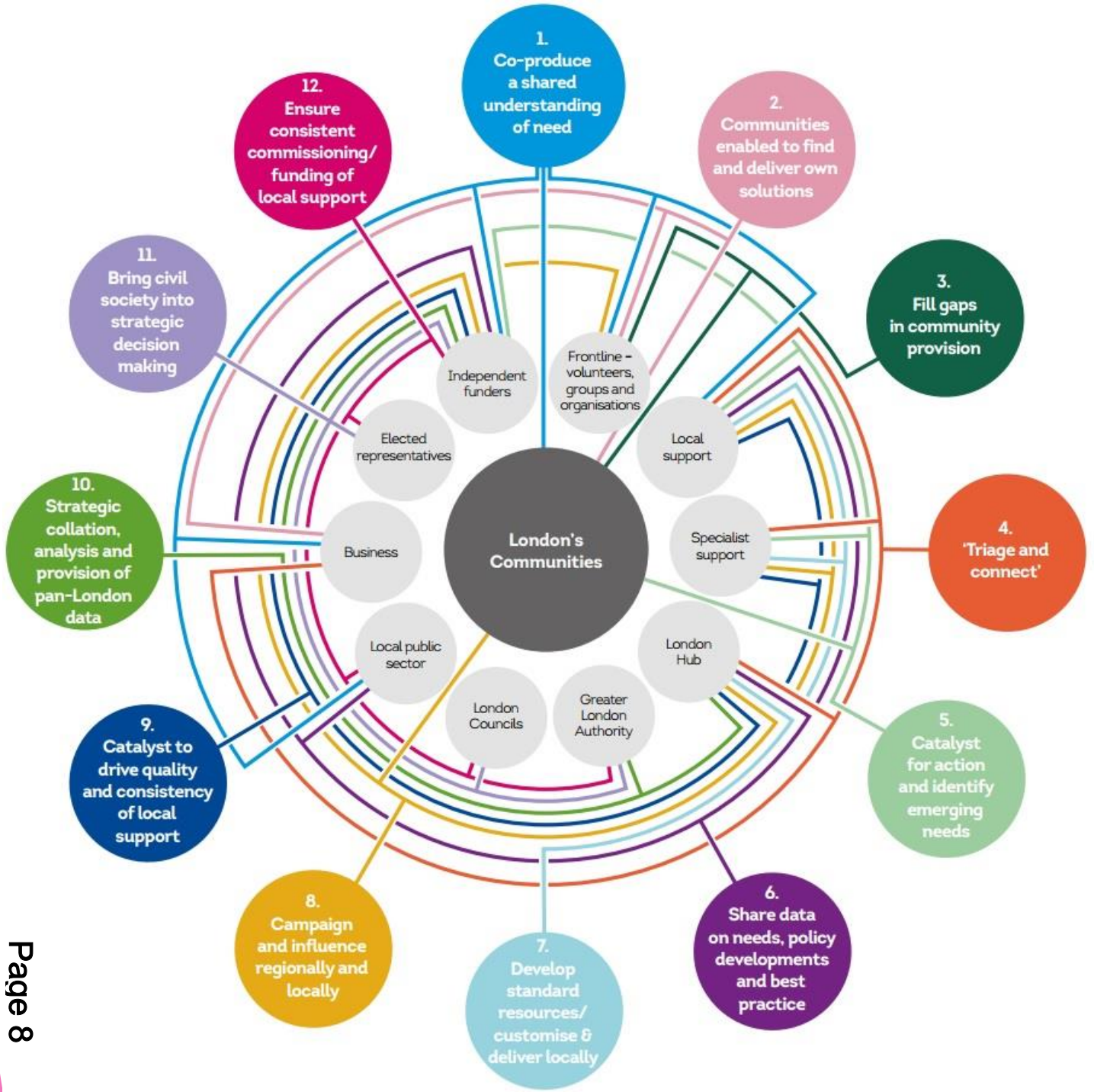
- ▶ April 2015: joint conference with LVSC and London Funders on NAVCA report
- ▶ September 2015: launched London review of civil society support
- ▶ October-November 2015: evidence gathering, focus groups, surveys
- ▶ December 2015: *The Change Ahead* published
- ▶ January-February 2016: testing thinking and recommendations
- ▶ March 2016: developing and refining recommendations
- ▶ April 2016: *The Way Ahead* published
- ▶ May 2016: discussions start on how we can achieve positive change

The big numbers

- ▶ 120,000 civil society groups and organisations
- ▶ 7.3 million Londoners use charity services each year
- ▶ 250,000+ paid staff in the sector
- ▶ 3.5 million volunteers active in London
- ▶ £27 billion contribution to the capital

The challenges civil society faces

- ▶ Needs growing in volume and complexity
- ▶ Increased demand for support, reduction in funding
- ▶ Expectation that volunteers fill the gap
- ▶ Competition for contracts
- ▶ “New” funding or business models as the solution
- ▶ Reduction in funding for civil society support



London Hub

Catalyst for regional change

Campaign regionally

Hold / share information

Shine a light on poor practice

Support improvement

Showcase innovation

Local support

Campaign locally

'Triage' / diagnose needs

Connect individuals/ groups/ organisations with support

Catalyst for local change

Enable effective volunteering

Identify emerging needs

Specialist support

Develop and provide specialist expertise (function or communities of interest)

Share data and best practice

Campaign on specialist issues

Achieving the change

- ▶ Discussions with key stakeholder groups
- ▶ Action planning with GLA and new Deputy Mayor
- ▶ Open space event on 30 November
- ▶ Commissioning prototyping and piloting of the approach
- ▶ Aiming for definition of “good” for key areas of the system by March 2017

The Way Ahead

Civil society at the heart of London

This page is intentionally left blank